

AIR CONDITIONING INSTALLATION MATERIALS

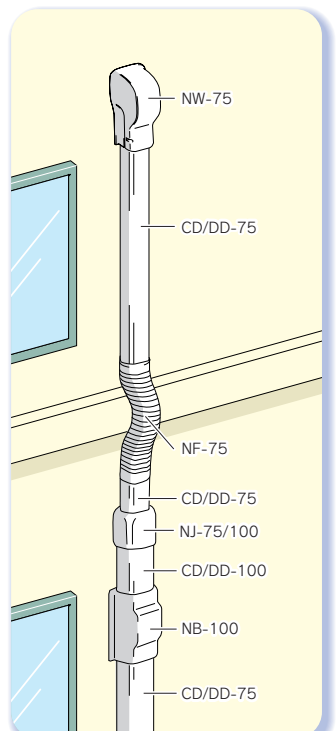
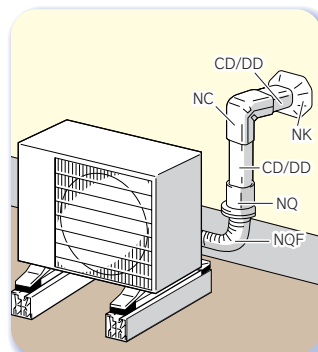
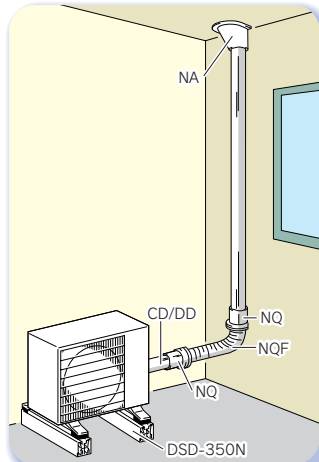
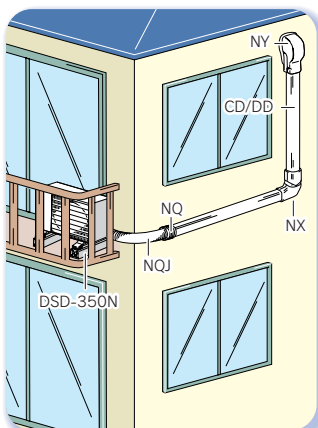
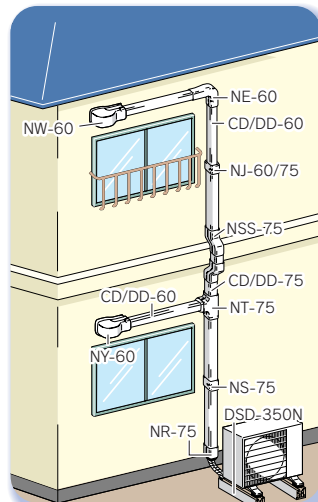
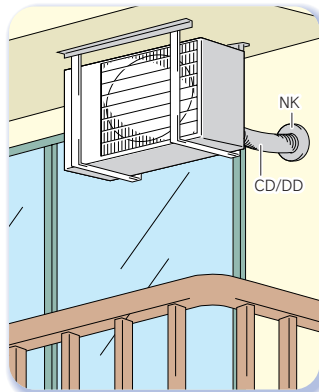
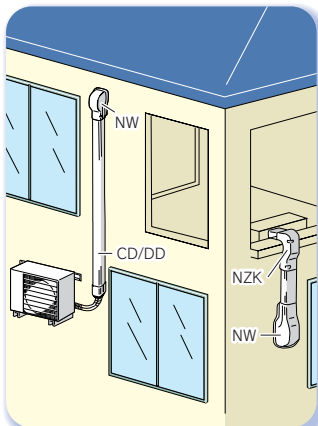
Vol.3

COSMETIC CASE for airconditioner pipelaying use.

Clean Duct

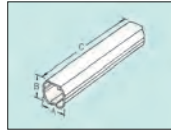


● Clean Duct's wide range of accessories make it easy for installers to layout airconditioning pipes beautifully and perfectly in any condition.



PVC Duct

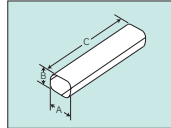
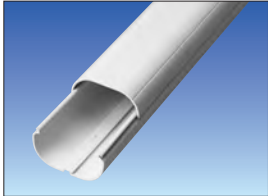
The neat appearance will harmonize your home. Economical model duct for your selection.



Item code		Dimension (mm)			Pcs/ carton
Ivory	White	A	B	C	
CD-60	CD-60W	57.5	58	2,000	5
CD-75	CD-75W	74	62	2,000	5
CD-100	CD-100W	99	68	2,000	5
CD-140	CD-140W	138	78	2,000	5

ASA Duct

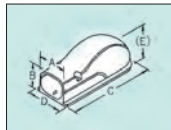
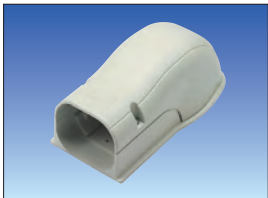
Newly released symmetrical duct made from ASA. Friendly for environment.



Item code		Dimension (mm)			Pcs/ carton
Ivory	White	A	B	C	
DD-60	–	59	60	2,000	10
DD-75	–	75.5	64	2,000	10
DD-100	–	100.5	70	2,000	5
DD-140	–	140	81	2,000	5

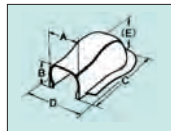
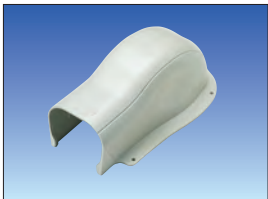
Wall Cover

Used in the area where the pipe is drawn into the wall.



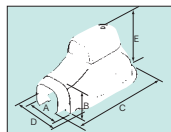
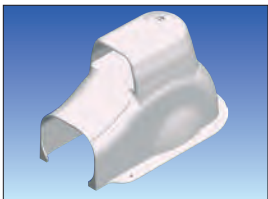
Item code		Dimension (mm)					Pcs/ carton
Ivory	White	A	B	C	D	E	
NW-60	NW-60W	65.5	65	200	77	81	10
NW-75	NW-75W	82	69	210	94	83	10
NW-100	NW-100W	107	75	231	119	96	5
NW-140	NW-140W	146	85	286	158	105	5

Wall Cover(Simple)



Item code		Dimension (mm)					Pcs/ carton
Ivory	White	A	B	C	D	E	
NY-60	NY-60W	67	63	201	114.5	81	10
NY-75	NY-75W	84	67	210	130	83	10
NY-100	NY-100W	106	70	230	141	93	5
NY-140	NY-140W	146	80	285	182	102	5

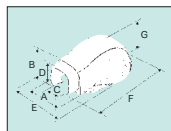
Ventilation Wall Cover



Item code		Duct size	Dimension (mm)					Pcs/ carton
Ivory	White		A	B	C	D	E	
NYK-60/75N	NYK-75NW	75	81.5	65.5	231.5	111.5	122.5	10

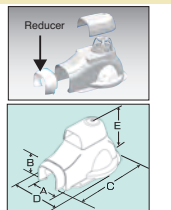
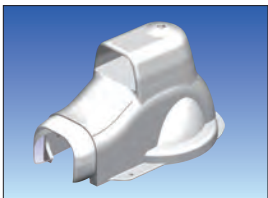
* Adaptable to DD · CD-60 duct with reducer.

Round Wall Cover



Item code		Duct size	Dimension (mm)							Pcs/ carton
Ivory	White		A	B	C	D	E	F	G	
NYM-60/75	NYM-75W	75	83.7	66.5	62.5	61	135	208	82.5	10

Ventilation Round Wall Cover

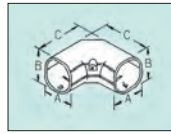
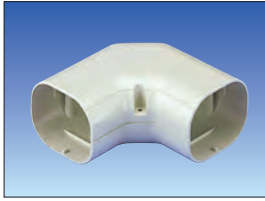


Item code		Duct size	Dimension (mm)					Pcs/ carton
Ivory	White		A	B	C	D	E	
NYX-60/75	NYX-75W	75	81.5	65.5	231.5	135	128	10

* Reducer not included in NYX-75W.

Elbow(Horizontal)

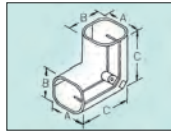
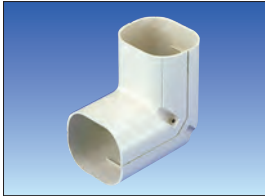
Used in the portion of pipe that bends 90°.



Item code		Dimension (mm)			Pcs/ carton
Ivory	White	A	B	C	
NE-60	NE-60W	65.5	65	120	10
NE-75	NE-75W	82	69	141	10
NE-100	NE-100W	107	75	161	5
NE-140	NE-140W	146	85	200	5

Elbow(Vertical)

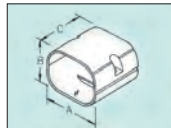
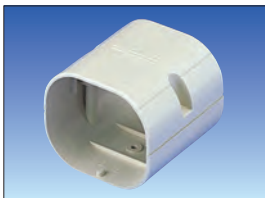
Used in the portion of pipe for turn up and down.



Item code		Dimension (mm)			Pcs/ carton
Ivory	White	A	B	C	
NC-60	NC-60W	65.5	65	120	10
NC-75	NC-75W	82	69	124	10
NC-100	NC-100W	107	75	135	5
NC-140	NC-140W	146	85	149	5

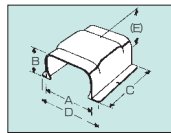
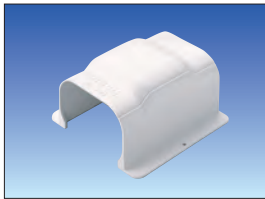
Socket

When lengthening the duct used on the connecting portion.



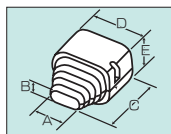
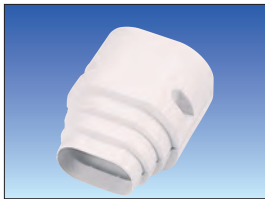
Item code		Dimension (mm)			Pcs/ carton
Ivory	White	A	B	C	
NS-60	NS-60W	65.5	65	80	10
NS-75	NS-75W	82	69	80	10
NS-100	NS-100W	107	75	80	5
NS-140	NS-140W	146	85	80	5

Divergent Socket



Item code		Duct size	Dimension (mm)					Pcs/ carton
Ivory	White		A	B	C	D	(E)	
NB-100	-	100	109	69	150	149	82	5
NB-140	-	140	148	82	170	188	92	5

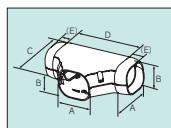
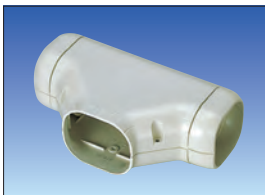
End Socket



Item code		Duct size	Dimension (mm)					Pcs/ carton
Ivory	White		A	B	C	D	E	
NR-60	NR-60W	60	53	30	87	65.5	65	10
NR-75	NR-75W	75	53	30	99	82	69	10
NR-100	NR-100W	100	53	30	115	107	75	5
NR-140	NR-140W	140	53	30	143	146	85	5

T-Joint

Used in the portion of pipe diverging.

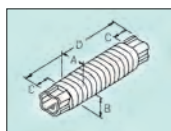


Item code		Dimension (mm)					Pcs/ carton
Ivory	White	A	B	C	D	E	
NT-75	NT-75W	82	69	121	160	25	5
NT-100	NT-100W	107	75	161	215	35	5
NT-140	NT-140W	146	85	200	254	35	5

* NT-75 supplied with ; 2pcs of Reducing adaptor (75→60)
 { 2pcs of Reducing adaptor (100→75)
 * NT-100 supplied with ; { 2pcs of Reducing adaptor (100→60)
 * NT-140 supplied with ; 2pcs of Reducing adaptor (140→100)

Flexible-Joint

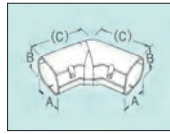
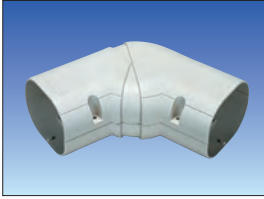
Made from polypropylene(P.P.).



Item code		Dimension (mm)				Pcs/ carton
Ivory	White	A	B	C	D	
NF-60	NF-60W	60	59.5	60	550	10
NF-60M	NF-60MW	60	59.5	60	1,000	5
NF-75	NF-75W	76	64	60	550	10
NF-75M	NF-75MW	76	64	60	1,000	5
NF-100	NF-100W	101	70	75	800	5
NF-140	NF-140W	140	80	80	1,000	5

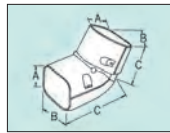
Universal Elbow (Horizontal)

Can be changed an angle 45°~90° as one likes.



Item code		Dimension (mm)			Pcs/ carton
Ivory	White	A	B	C	
NX-60	NX-60W	65.5	65	(137)	10
NX-75	NX-75W	82	69	(153)	10
NX-100	NX-100W	107	75	(193.5)	5
NX-140	NX-140W	146	85	(248)	5

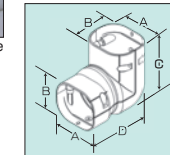
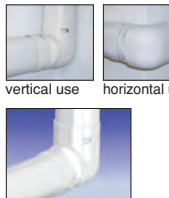
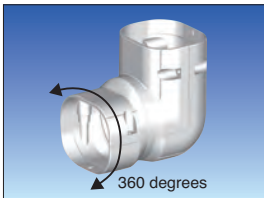
Universal Elbow (Vertical)



Item code		Dimension (mm)			Pcs/ carton
Ivory	White	A	B	C	
NZ-60	NZ-60W	65.5	65	(118)	10
NZ-75	NZ-75W	82	69	(122)	10

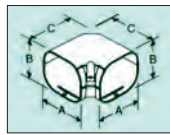
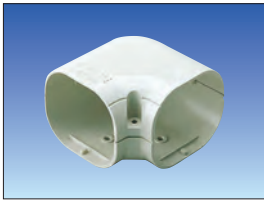
Universal Elbow (Vertical&Twisted 360°)

Duct can be tilted at various (360°) angles.



Item code		Duct size	Dimension (mm)				Pcs/ carton
Ivory	White		A	B	(C)	D	
NCX-75	NCX-75W	75	80	68	114	121	10

Mini Elbow(Horizontal)



Item code		Dimension (mm)			Pcs/ carton
Ivory	White	A	B	C	
NH-60	NH-60W	65.5	65	85	10
NH-75	NH-75W	82	69	100	10
NH-100	NH-100W	107	75	125	5
NH-140	NH-140W	146	85	165	5

Mini Elbow(Vertical)



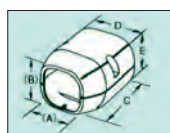
Item code		Dimension (mm)			Pcs/ carton
Ivory	White	A	B	C	
NL-60	NL-60W	65.5	65	75	10
NL-75	NL-75W	82	69	83	10
NL-100	NL-100W	107	75	90	5
NL-140	NL-140W	146	85	100	5

End Socket



Item code		Dimension (mm)					Pcs/ carton
Ivory	White	A	B	C	D	E	
NR-60	NR-60W	53	30	87	65.5	65	10
NR-75	NR-75W	53	30	99	82	69	10
NR-100	NR-100W	53	30	115	107	75	5
NR-140	NR-140W	53	30	143	146	85	5

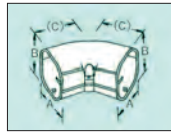
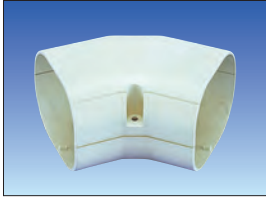
Variant Socket



Item code		Duct size	Dimension (mm)					Pcs/ carton
Ivory	White		(A)	(B)	C	D	E	
NJ-60/75	NJ-60/75W	60/75	69.5	68	80	82	69	10
NJ-75/100	NJ-75/100W	75/100	86	72	80	107	75	10
NJ-100/140	NJ-100/140W	100/140	115	78	80	146	85	5

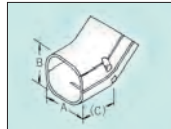
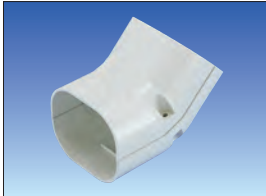
45° Elbow(Horizontal)

Used in the area where the pipe bends 45°.



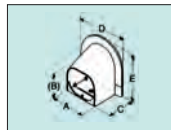
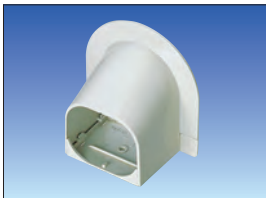
Item code		Dimension (mm)			Pcs/ carton
Ivory	White	A	B	C	
NM-60	NM-60W	65.5	65	68	10
NM-75	NM-75W	82	69	74	10
NM-100	NM-100W	107	75	84	5
NM-140	NM-140W	146	85	106	5

45° Elbow(Vertical)



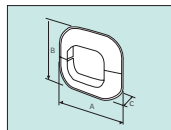
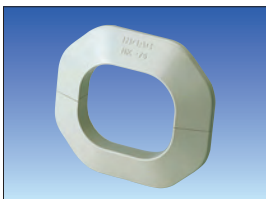
Item code		Dimension (mm)			Pcs/ carton
Ivory	White	A	B	C	
NU-60	NU-60W	65.5	65	67	10
NU-75	NU-75W	82	69	72	10
NU-100	NU-100W	107	75	83	5
NU-140	NU-140W	146	85	93	5

Corner Cap



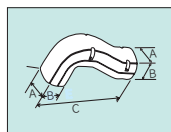
Item code		Dimension (mm)					Pcs/ carton
Ivory	White	A	(B)	C	D	E	
NA-60	NA-60W	67	65	66	105	110	10
NA-75	NA-75W	84	70	66	124	125	10
NA-100	NA-100W	109	76	66	149	140	5
NA-140	NA-140W	148	86	66	189	155	5

Wall Cap



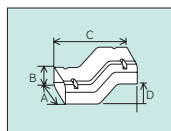
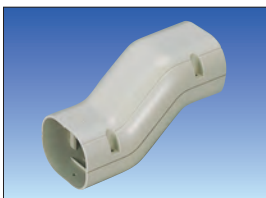
Item code		Dimension (mm)			Pcs/ carton
Ivory	White	A	B	C	
NK-60	NK-60W	110	110	16	10
NK-75	NK-75W	126	114	16	10
NK-100	NK-100W	175	145	16	5
NK-140	NK-140W	220	180	16	5

T-corner Elbow



Item code		Dimension (mm)			Pcs/ carton
Ivory	White	A	B	C	
NZK-60	NZK-60W	65.5	65	222.2	5
NZK-75	NZK-75W	82	69	226	5

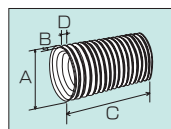
Bridge Socket



Item code		Dimension (mm)				Pcs/ carton
Ivory	White	A	B	C	D	
NSS-75	—	82	69	175	50	10

Twisted&Flexible Elbow

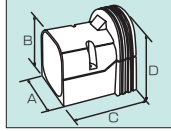
Can be cut to suit.



Item code		Duct size	Dimension (mm)				Pcs/ carton
Ivory	White		A	B	C	D	
NQF-75	—	75	76	6	1000	8	5
NQF-100	—	100	101	8	1000	10	5

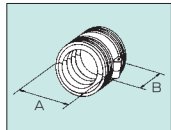
* Fitted for both NQ-60 and NQ-70.

Twisted Elbow Socket



Item code		Duct size	Dimension (mm)				Pcs/ carton
Ivory	White		A	B	C	D	
NQ-60	-	60	65.5	65	90	85.5	10
NQ-75	-	75	82	69	90	85.5	10
NQ-100	-	100	107	75	102	94	5

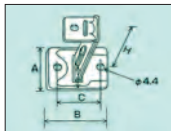
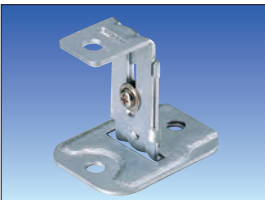
Twisted Elbow Joint



Item code		Duct size	Dimension (mm)		Pcs/ carton
Ivory	White		A	B	
NQJ-75	-	75	88	54	10
NQJ-100	-	100	113	63	5

Metal Duct Leg

Used for raising Clean Duct 40~65mm.



Item code	Dimension (mm)				Pcs/ carton
	A	B	C	H	
NP-UK	38	52	36	40~65	10×10

Saddle Band

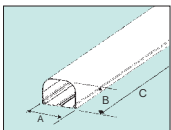
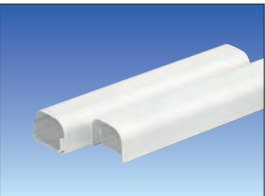


Item code	Length (mm)	Pcs/carton
NV-S	250	500
NV-L	360	500

NV-S:60,75
NV-L:100,140

LV Series (Ducts and fittings for indoor use)

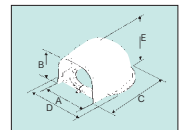
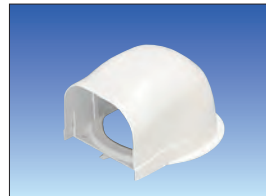
Duct(for indoor use)



Item code	Duct size	Dimension (mm)			Pcs/ carton
		A	B	C	
White	90	86.9	65	2000	10(5×2)
LV-90	90	86.9	65	2000	10(5×2)

Wall Cover

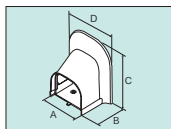
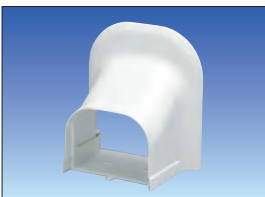
Suitable for wall with or without wall cap on it.



Item code	Duct size	Dimension (mm)					Pcs/ carton
		A	B	C	D	E	
White	90	90.9	67	127.9	116	78.5	10
LVW-90	90	90.9	67	127.9	116	78.5	10

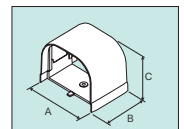
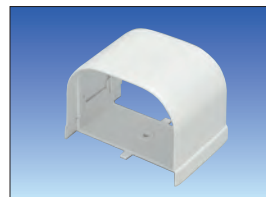
Corner Cap

Cover for through hole on the ceiling.



Item code	Duct size	Dimension (mm)				Pcs/ carton
		A	B	C	D	
White	90	90.9	71.7	130	120	10
LVA-90	90	90.9	71.7	130	120	10

Socket

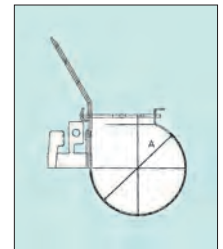
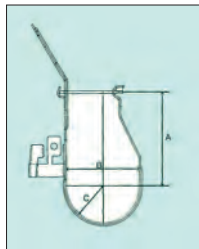


Item code	Duct size	Dimension (mm)			Pcs/ carton
		A	B	C	
White	90	90.9	63.4	67	10
LVS-90	90	90.9	63.4	67	10

ACCESSORIES

Pair Hanger ● Metal fittings to support insulated copper tubes and drain pipe.

- Quick and easy to install
- No tools or preparation required to install
- Saves time for the installer
- Fits securely on threaded rod
- Easy to stock and transport



Item code	Weight (g)	Material	Conformable size	Color	Packing pcs/carton
PNE-2	67	SS41	1/4 x 5/8 ~ 1/2 x 3/4	black	200
PNE-3	72	SS41	1/4 x 5/8 ~ 5/8 x 1	black	200
PNE-4	81	SS41	1/4 x 5/8 ~ 1 1/8 x 1 1/2	black	150

Item code	Weight (g)	Material	Conformable size	Color	Packing pcs/carton
SDP-3	58	SS41	20 · 25 · 30	black	100

● Installation

- Fit Pair Hanger onto threaded rod from the side gap.
- Push Pair Hanger toward the threaded rod, as shown.
- Bend the back stopper of PNE, fit in the threaded rod.
- Set IPO-Tube, wire and/or hoses into the Pair Hanger.
- Lock PNE.
- Final view of the installed Pair Hanger supporting two pipes.

High-Drain S

High-Drain ● High-Drain hose has excellent weatherability and mold resistance.



High-Drain S

Item code	Inner diameter × Outer diameter (mm)	Length (m)	Packing Pcs/carton
DRS-14	φ14×19	50	8
DRS-16	φ16×21.3	50	6



High-Drain

Item code	Inner diameter × Outer diameter (mm)	Length (m)	Packing Pcs/carton
DRX-14	φ14×19.4	50	8
DRX-16	φ16×21	50	8

INOAC INTERNATIONAL CO.,LTD.

2-13-4 Meieki-minami Nakamura-ku, Nagoya
450-0003 Japan

Tel: (+81)52-561-7767

Fax: (+81)52-561-7256

INOAC INDUSTRIES (THAILAND) CO.,LTD.

Kabinburi Industrial Zone 515 Moo 9, Kabinburi-Korat Rd.,
Nongkee, Kabinburi, Prachinburi 25110 Thailand

Tel: (+66)37-204-485

Fax: (+66)37-282-514

**INOAC CORPORATION
HOUSING & CONSTRUCTION MATERIALS COMPANY**

4-9-24, Taiho, Atsuta-ku, Nagoya, 456-0062, Japan

Tel: (+81)52-684-0266

Fax: (+81)52-684-0277

URL [http:// www.inoac.co.jp](http://www.inoac.co.jp)

This information does not create any warranties, express or implied, including any warranty of merchantability or fitness for a particular purpose. Results may vary under conditions of use, and the customer should assure that the selected materials meet his specific needs. Design and specification are subject to change without notice.